

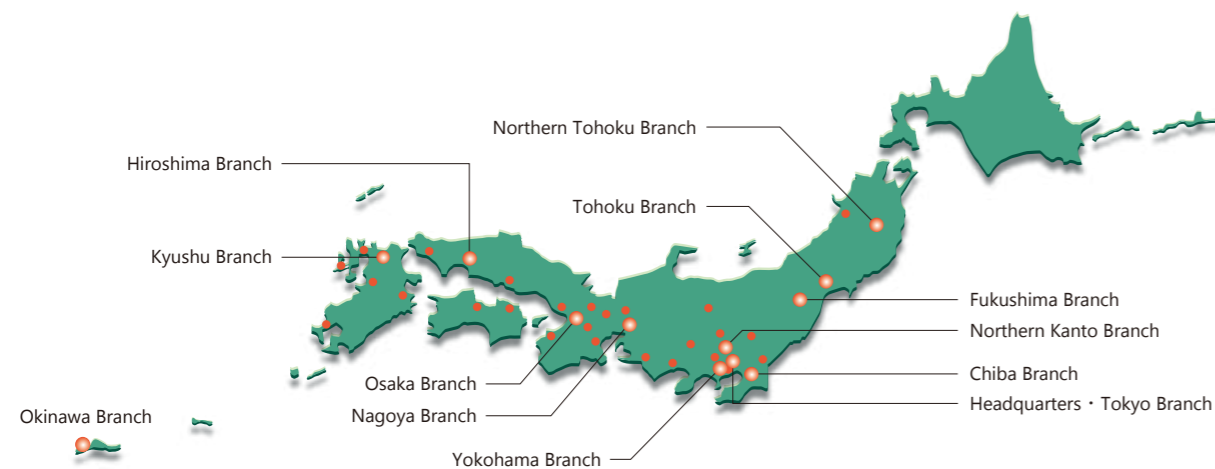
■ Corporate Profile

• Company name	OHBA Company, Ltd.	• Stock Listing	Tokyo Stock Exchange (First Section)
• President, Representative Director	Shigeru Tsujimoto	• Number of Employees	524 (As of May 2017 consolidated)
• Founded	October 1, 1922	• Main Banks	Mizuho Bank Sumitomo Mitsui Trust Bank Bank of Yokohama Chiba Bank
• Headquarters Address	4-4-12 Aobadai, Meguro-ku, Tokyo	• Subsidiaries	Japan Urban Planning Co., Ltd. Tohoku Urban Planning Co., Ltd. Kinki Urban Planning Co., Ltd.
• Paid-in Capital	2,131,730,000 yen (As of May 2017)		
• Sales	15,542 million yen (FY ended May 2017, consolidated)		

■ Number of Certified Professionals

• Professional Engineers	155	• Registered Civil Consulting Engineers	133
Construction	110	• First-Class Certified Architects	20
Water and sewage	12	• Second-Class Certified Architects	9
Environment	6	• Land Readjustment Specialists	87
Applied Science	1	• Certified Surveyors	139
Agriculture	1	• First-Class Civil Construction Managers	137
Sanitation	1	• First-Class Landscape and Garden Construction Managers	44
Comprehensive Technical Management	24	• Real Estate Transaction Specialists	45

■ Locations



Region	Branch	Liaison Offices Locations
Tohoku Region	Tohoku Branch Northern Tohoku Branch	Ishinomaki Akita Liaison Onagawa
Kanto Region	Tokyo Branch Yokohama Branch Fukushima Branch	Northern Kanto Branch Chiba Branch
Chubu Region	Nagoya Branch	Tochigi Ibaraki Sagamihara
Kansai Region	Osaka Branch	Shizuoka Gifu Hamamatsu Mie
Chugoku Region	Hiroshima Branch	Kyoto Kobe Shiga Nara Wakayama
Kyushu Okinawa Region	Kyushu Branch Okinawa Branch	Yamaguchi Shikoku Okayama Ehime
		Saga Kumamoto Oita Kagoshima

**Innovator for the Future**  
OHBA is a solutions provider in urban planning and implementation.



Our expertise in urban planning and implementation enables us to serve our clients in multiple areas.

Adapting to the Information Society

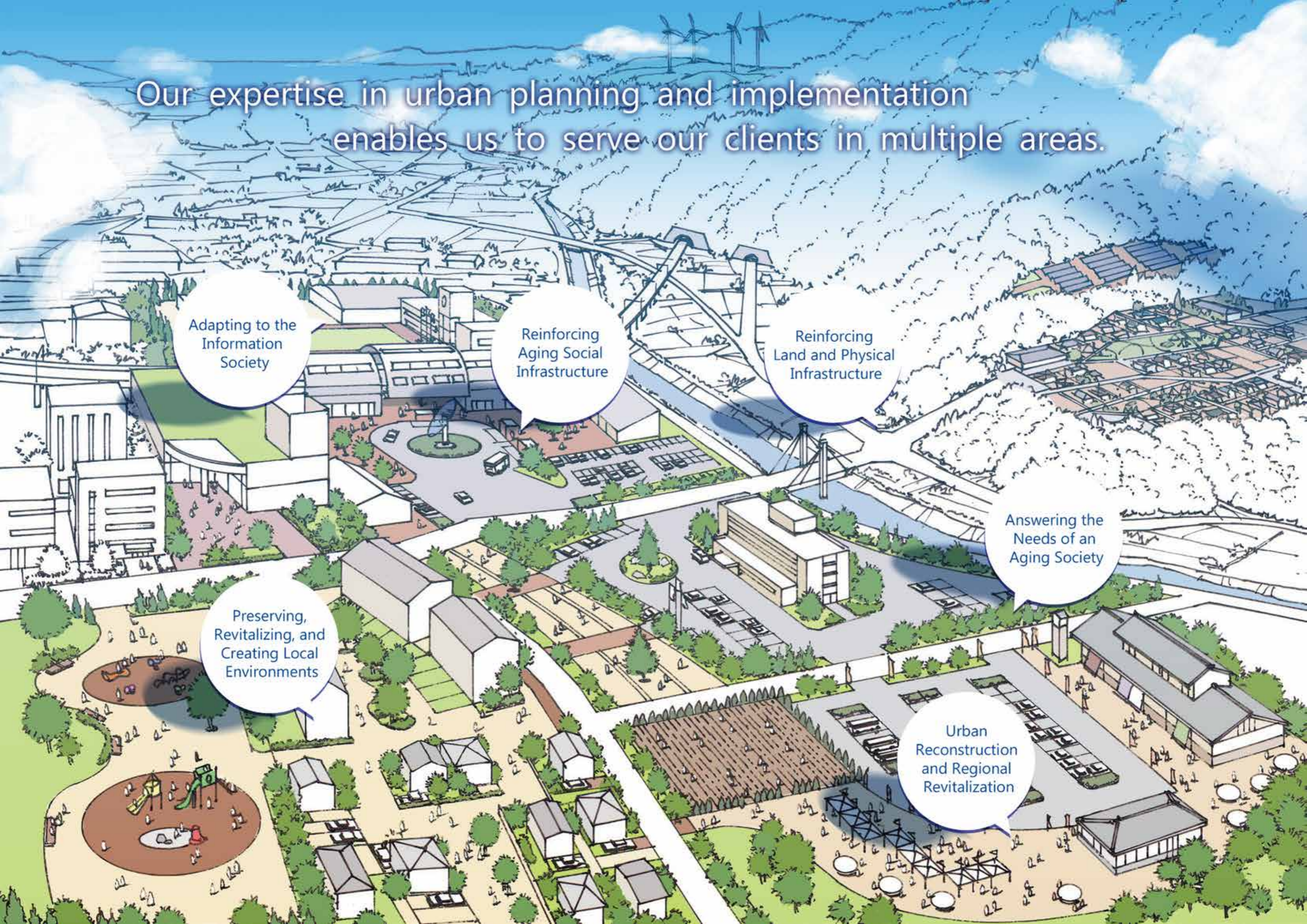
Reinforcing Aging Social Infrastructure

Reinforcing Land and Physical Infrastructure

Answering the Needs of an Aging Society

Preserving, Revitalizing, and Creating Local Environments

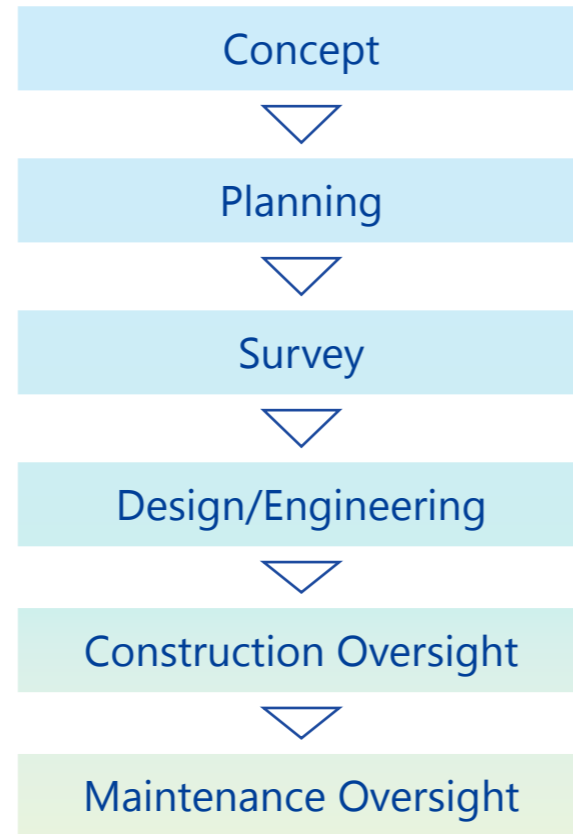
Urban Reconstruction and Regional Revitalization



## OHBA provides “one-stop service” from initial planning to maintenance oversight of the finished project.

Construction consultants have developed through their ability to implement safe, secure social infrastructures that assure comfortable living for the nation’s citizens. In recent years, the expectations toward construction consultants have become increasingly varied and sophisticated. We must respond to the new demands that derive from a rapidly changing information society, an aging population, and the increasing need to reinforce land and physical infrastructure.

As a comprehensive construction consultant, OHBA is able to provide in one package all that is necessary to any project: initial conceptualization, planning, surveys, designs, construction management and continual maintenance oversight, as well as all services responding to the growing demands of the times, demands for such things as establishment of social consensus, state-of-the-art project management, and maintenance of civic infrastructures.



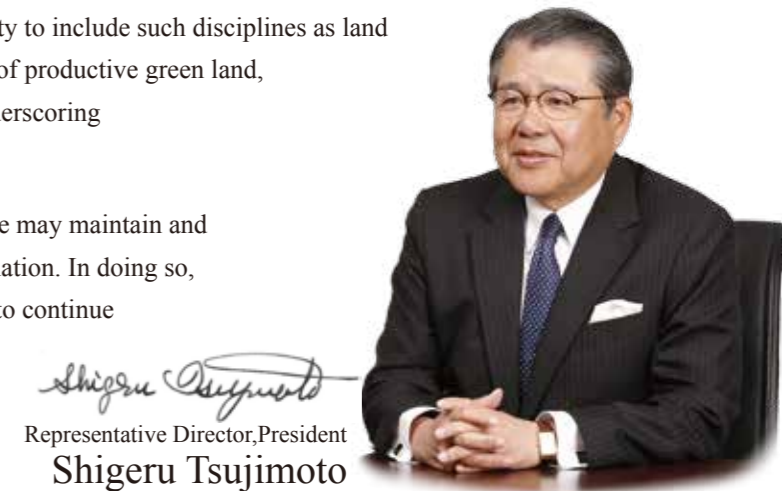
## Acting as a solutions company for urban planning issues, OHBA remains committed to providing consulting services of the highest quality.

OHBA was founded in 1922 with the determination to develop as a private enterprise in an era when a majority of surveying work was performed under the direct control of government agencies.

Since the beginning, our corporate philosophy has been: “We will contribute to the development of society by providing premium quality services through our state-of-the-art technologies and extensive experience while fully living up to the expectations of our customers, shareholders and employees.” We continue to this day to provide consulting services associated with maintaining and improving social infrastructure both in Japan and abroad.

While in recent years part of our focus has been on disaster-recovery projects, we have also been increasingly expanding the range of our consultancy specialty to include such disciplines as land management custodianship, consultation on handling tracts of productive green land, agency service for land readjustment projects and more, underscoring OHBA’s role as a comprehensive urban consultant.

At OHBA we continuously strive to grow and evolve that we may maintain and enhance our contribution to the social infrastructure of our nation. In doing so, we hope we may look forward to your support, enabling us to continue delivering premium-quality consulting services while acting as the solutions provider for the re-creation of your town or city environment.



Representative Director, President  
Shigeru Tsujimoto

### Urban Planning

Our aim is to utilize regional features to create environments where residents feel secure and comfortable.

We propose development plans and provide consultation for town and city planning encompassing infrastructure design, including regional planning, zoning, land readjustment and more, always with an eye on the importance of such factors as the vitality, welfare, environment, scenery and history of the area.

In addition, we continuously strive to incorporate into our current and upcoming urban planning projects the experiences derived from our being a part of the recovery projects undertaken after the Eastern Japan Great Earthquake Disaster and the Kumamoto Earthquake. We also provide technical support and research related to the various regulations and permit acquisitions necessary for land usage and zoning.

#### Principal Services:

Urban planning and development / Land readjustment / Permit acquisitions related to land alterations / Architectural planning and design  
Parks and environmental design / Golf-course renovation / International projects



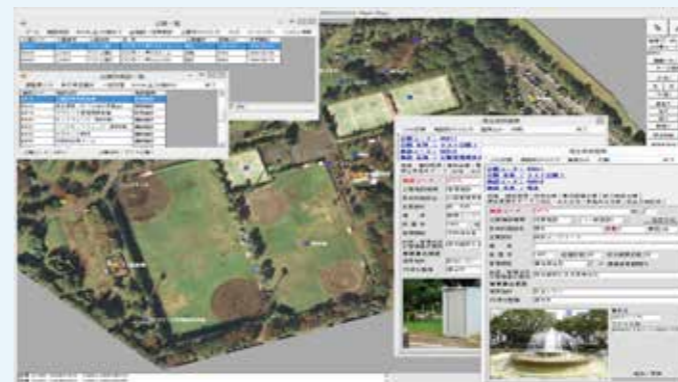
### Systems Development

We aim to enhance the efficiency and convenience of society through the maximization of ICT (Information and Communications Technology).

Drawing on our broad range of experience in urban planning, geospatial information, civil engineering, environmental research and more, OHBA has developed a GIS (Geospatial Information System) and other related systems that allow us to propose optimal solutions.

#### Principal Services:

GIS system development / Development of GIS applications  
Development of additional applications



### Land Usage Solutions

We are able to contribute to the resolution of issues in your community with three one-stop consultation services.

- (1) Acting as an agent of land readjustment and development.
- (2) Consultation for inheritance taxation and real estate usage in collaboration with tax accounting professionals.
- (3) Consultation for inheritance of productive green land and its continued usage/renewal as is.

#### Principal Services:

Proxy services for sale or development of permit-approved real estate  
Sale of inherited land with tax consultations  
Consultation for effective use of land including productive green land



# OHBA's urban planning is rooted in the know-how of our professional engineers and Technical experts.

Our professionals, with a broad range of specialty knowledge, nearly 100 years of accumulated experience, state-of-the-art techniques, and flexible communication skills are prepared to propose urban design solutions that meet every aspect of the client's needs.



## Geospatial Information

We provide advanced, multifaceted information for urban planning.

Geographical and geospatial data are not only fundamental to urban planning but also essential for the management of corporate and private properties.

At OHBA, we perform surveys with the latest technologies, including MMS, UAV (drones), and 3-D lasers. We also provide technical services such as property evaluation necessary to land acquisition for public works, to town and city planning, and to property management.

### Principal Services:

Land survey / Property evaluation



## Civil Engineering

We provide the technical services necessary to create social infrastructures that support safe and secure living.

We provide infrastructural designs for the resources that form the foundation of urban planning, such as roads, rivers, bridges and water supplies, as well as for carrying out the management of public properties.

We also provide technical services to enhance the reinforcement of public properties by creating hazard maps in order to incorporate disaster prevention/reduction through the seismic reinforcement of bridges and tunnels as well as mechanical analyses aimed at landslide prevention.

### Principal Services:

Reinforcement of roads and related structures  
River and erosion control / Water and sewage systems  
Geological and soil engineering / Infrastructure management



## Environment

We contribute to the creation of future environments designed to coexist seamlessly with any environment already in existence.

In creating comfortable urban conditions, we must inevitably deal with the necessity of melding the new environment with the old. To this end, we provide such technical services as soil decontamination, water quality preservation, and waste management, services grounded in our broad experience in environmental research and assessment.

### Principal Services:

Environmental assessment  
Environmental preservation and creation  
Environmental regeneration-related work



## Civil Asset Custodianship

As society moves toward increasing emphasis on the maintenance of land and infrastructure, we offer an increasing range of custodial services.

For many landowners, maintenance of their properties is hugely burdensome.

At OHBA, we provide a wide range of land-management related services, such as re-surveys, drill tests, mowing, and periodic confirmation of optimum conditions.

### Principal Services:

Custodial land and attached asset management  
Custodial surveys and research  
Sale of real estate scheduled for disposal

